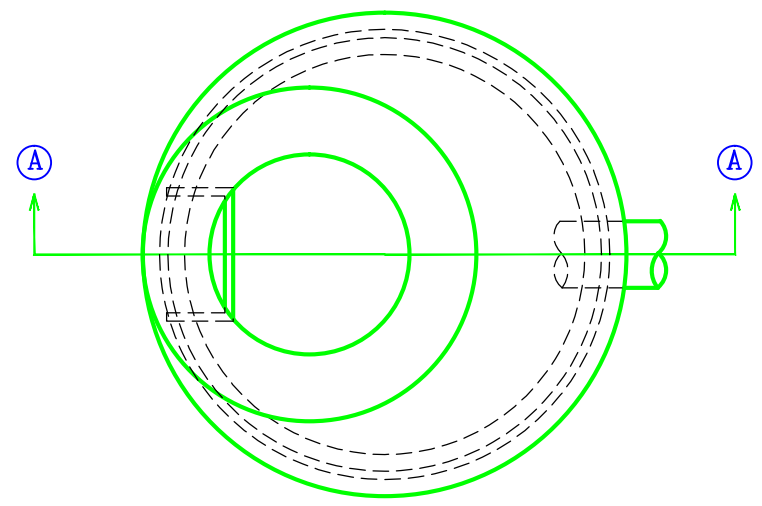
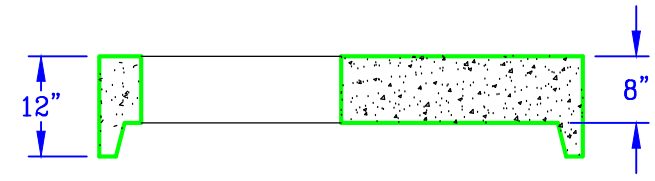


SECTION A-A



PLAN VIEW



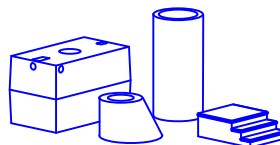
ALTERNATE FLATTOP

- NOTES:
1. Concrete Compressive Strength:
4000 PSI @ 28 days.
 2. Designed for H-20 Wheel Loading.
 3. Conforms to ASTM-C478 Specifications.
 4. Reinforced to .12 in.sq./LF.
 5. Manhole Joints Sealed with Butyl Rubber.
 6. Aluminum or Plastic Steps @ 12" O.C.

Aroosta Cast, Inc.

217 Parsons Road
Presque Isle, ME 04769

Tel/Fax: 207-764-0077 Email: sales@aroostacast.com



DRAWING:

Manhole - 48" I.D.

SCALE: NTS

PAGE 1 OF 1