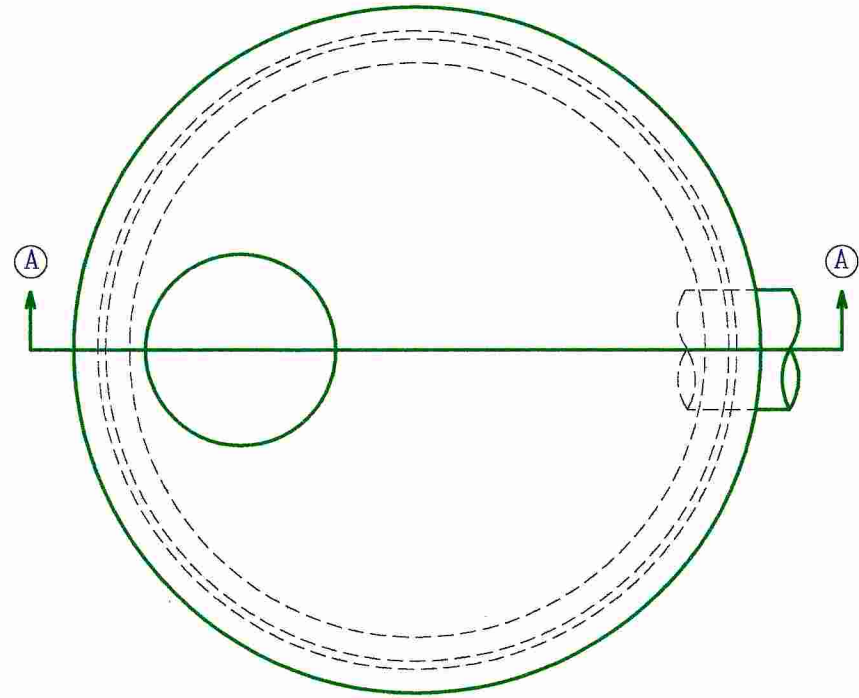


SECTION A-A



PLAN VIEW

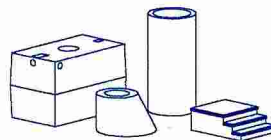
NOTES:

1. Concrete Compressive Strength:  
4000 PSI @ 28 days.
2. Designed for H-20 Wheel Loading.
3. Conforms to ASTM-C478 Specifications.
4. Reinforced to .12 in.sq./LF.

Aroosta Cast, Inc.

217 Parsons Road  
Presque Isle, ME 04769

Tel/Fax: 207-764-0077 or 800-773-0071



DRAWING:

Catchbasin - 6' I.D. #1

SCALE: 1/2" = 1'

PAGE 1 OF 1